



**Western International
School of Shanghai**

上海西华外籍人员子女学校

Excellence in International Education



**Western International
School of Shanghai**

上海西华外籍人员子女学校



Western International School of Shanghai

上海西华外籍人员子女学校

WELCOME

At Western International School of Shanghai (WISS), we welcome families to learn more about our vibrant community of learners all year round. WISS is a place where students from diverse backgrounds come together to explore, grow, and thrive in a supportive and nurturing environment.

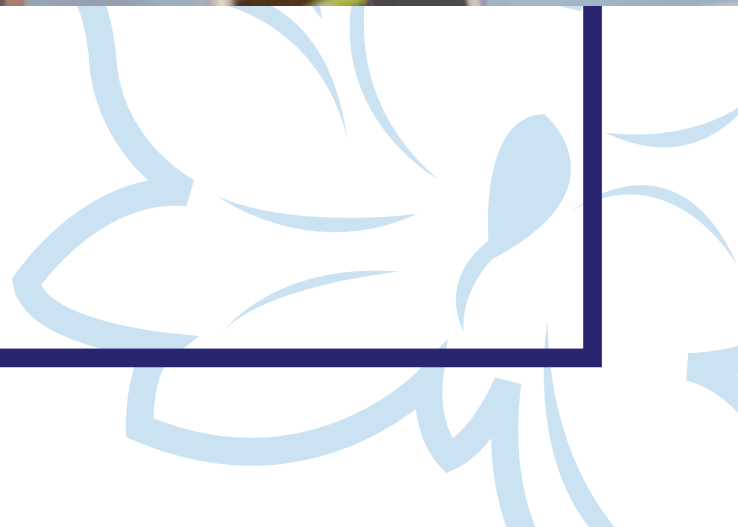
We invite families to discover the unique educational experiences offered at WISS, rooted in the International Baccalaureate (IB) philosophy. Our commitment to academic excellence, character development, and cultural understanding prepares students for success in an ever-changing world.

Join us as we embark on a journey of inquiry, creativity, and personal growth. We look forward to sharing with you what makes WISS a special place for international education and how we can partner with you in your child's learning journey. Welcome to our community!



Table of Contents

- 08 | WISS History
- 10 | Vision and Mission
- 12 | WISS Snapshot
- 14 | Age -Grade Level Placement Guide
- 16 | The WISS Education
- 18 | Lower Elementary School Profile
- 20 | Middle & Upper Elementary School Profile
- 22 | Secondary School Profile
- 24 | Facilities and Campus
- 26 | Community and Student Support
- 28 | Extracurricular Activities
- 30 | Academic Advisory Programme
- 32 | University Acceptances
- 34 | Accreditations and Associations
- 36 | Admissions
- 36 | Chinese Language Version



WISS History

Established in 2006, the Western International School of Shanghai (WISS) has become a leading institution for international education, serving students aged 2.5 to 18. From the beginning, WISS has focused on providing a holistic educational experience that embraces diversity and fosters global citizenship.

Initially welcoming a small group of students, WISS has expanded significantly, now representing over 50 nationalities. This multicultural environment enriches the learning experience, preparing students for a globalized world.



WISS is recognized as the first and only full continuum International Baccalaureate (IB) World School in mainland China, allowing for a seamless educational journey through the IB programmes. The school carries accreditations by the IB Organization, Western Association of Schools of Colleges (WASC) and a Council of International Schools Member (CIS). As a school WISS has achieved notable milestones, including a strong track record of university acceptances at prestigious institutions such as the University of Chicago and University College London.





Over the years, WISS has continually invested in its state-of-the-art campus and resources, emphasizing the importance of extracurricular activities that complement academic learning. As WISS looks to the future, it remains committed to nurturing well-rounded individuals equipped to meet the challenges of an evolving world. Through its dedication to educational excellence, WISS inspires and empowers students to become lifelong learners and responsible global citizens.



Vision & Mission



Vision

The Western International School of Shanghai challenge and empower students through an unparalleled IB education.

Mission

We will achieve this vision for our diverse community through innovative, high-quality, inquiry-based learning and teaching, with individualized student learning pathways.



The Western International School of Shanghai (WISS) was founded on the principles of the International Baccalaureate (IB) educational philosophy, emphasizing global-mindedness and understanding, alongside the Chinese educational philosophy of De (heart), Zhi (mind), and Ti (body).

This foundation prepares our students to engage with the world empathetically and constructively. At WISS, we recognize and celebrate the individuality of each student. We understand that their needs, interests, and aptitudes vary, and we are dedicated to helping them reach their full potential. Our commitment to the IB programmes allows us to tailor our approach, ensuring that students develop their strengths while improving in other areas.

The integration of the IB approach with the De-Zhi-Ti philosophy creates a unique educational environment at WISS, fostering a shared vision among students, families, and staff. De (德) emphasizes the importance of building healthy relationships based on care, respect, and responsibility within the community. Zhi (智) focuses on developing critical thinking and problem-solving skills, allowing students to tackle challenges creatively. Ti (体) highlights the need for a balanced lifestyle, nurturing the physical, emotional, and mental well-being of our students.

Through the collective efforts of our dedicated teachers, engaged students, and supportive families, WISS has established a strong identity and vision, celebrating over 15 years of excellence in education. We are committed to nurturing well-rounded individuals who are prepared to navigate the complexities of the world with compassion, intelligence, and resilience.

WISS Snapshot



18+ Years of excellence in international education in Shanghai



80% Faculty with Advanced Degrees



2 Aquatic Centers



1 Dance Studio



150+ After School Activities





5:1 Faculty to Student Ratio



2 Libraries



2 Gymnasiums



1 Performing Arts Centre



100% Matriculation Rate



Age - Grade Level

Placement Guide



This guide is a reference for entry to **WISS** from other education systems.

WISS (IB) Model				USA Model	UK Model
Age	Entry Grade (WISS)	Learning Phase	IB Curriculum	Entry Grade	Entry Grade
2.5	Pre-N	Lower Elementary	IB Primary Years Programme	Pre-N	Toddler
3-4	Nursery			Nursery	Nursery
4-5	Pre-K			Pre-K	Reception
5-6	KG			K	Year 1
6-7	Grade 1	Middle & Upper Elementary		Grade 1	Year 2
7-8	Grade 2			Grade 2	Year 3
8-9	Grade 3			Grade 3	Year 4
9-10	Grade 4			Grade 4	Year 5
10-11	Grade 5			Grade 5	Year 6
11-12	Grade 6	Secondary		IB Middle Years Programme	Grade 6
12-13	Grade 7		Grade 7		Year 8
13-14	Grade 8		Grade 8		Year 9
14-15	Grade 9		Grade 9		Year 10
15-16	Grade 10		Grade 10		Year 11
16-17	Grade 11		IB Diploma Programme / IB Career-related Programme	Grade 11	Year 12
17-18	Grade 12			Grade 12	Year 13

the WISS Education

At the Western International School of Shanghai (WISS), we pride ourselves on offering a truly globalized education that welcomes students from all national curriculum programmes. Our unique position as the only full continuum International Baccalaureate (IB) World School in mainland China allows us to cater to a diverse international community.

The WISS Education is designed to provide a holistic, student-centered learning experience that empowers each child to reach their full potential. We believe that education extends beyond the classroom, encouraging students to discover their passions and explore their talents across academics, arts, athletics, and languages. Our commitment to nurturing critical 21st-century skills ensures that students are well-prepared for the challenges of a rapidly changing world, fostering independent thinkers and responsible global citizens.



Curriculum and Programmes

WISS offers a robust but balanced academic programme based on the IB framework. Our internationalized curriculum is unique as we are the only full continuum IB World School in mainland China.

We offer:

- Primary Years Programme (IBPYP) for Elementary (Pre-Nursery to Grade 5)
- Middle Years Programme (IBMYP) for Lower Secondary students (Grades 6-10)
- Diploma Programme (IBDP) for Upper Secondary students (Grades 11 and 12)
- Career-related Programme (IBCP) for Upper Secondary students (Grades 11 and 12)

In addition to the IB programmes, WISS offers:

- A wide range of language options including English, Chinese, *German, *Spanish, *Korean, and *French
- Diverse electives and exploratory classes in arts, technology, physical education, and more
- Personalized learning pathways to meet each student's unique needs
- Internship Programmes

* **Based on demand and demographics**



Lower Elementary

School Profile





The Western International School of Shanghai (WISS) Lower Elementary programme is dedicated to nurturing young learners aged 2.5 to 5 through a holistic and inquiry-based approach. This curriculum fosters social, emotional, physical, and cognitive development by encouraging children to explore their interests and ask questions. By integrating subjects like language arts, mathematics, science, and the arts within thematic units, students engage in hands-on activities that promote critical thinking and real-world connections.

WISS prioritizes creating a caring community where children feel safe and valued, with dedicated educators fostering positive relationships. Parental involvement is encouraged through regular communication and events that celebrate student achievements, reinforcing the connection between home and school.

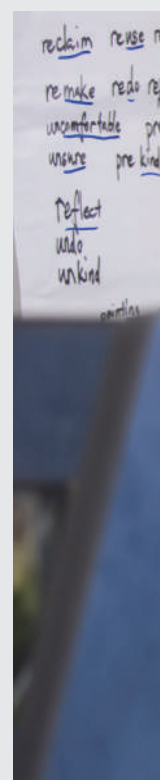
The programme also emphasizes global citizenship, exposing children to diverse cultures and perspectives to cultivate empathy and understanding. Overall, the WISS Lower Elementary programme lays a strong foundation for lifelong learning by celebrating each child's unique journey and preparing them for future academic success in a multicultural environment.

Middle and Upper Elementary

School Profile

The Middle and Upper Elementary School at the Western International School of Shanghai (WISS) is designed for students aged 6 to 11 (Grades 1 – 5), focusing on fostering a love for learning through an engaging and comprehensive curriculum. Our programme emphasizes inquiry-based learning, encouraging students to explore, ask questions, and develop critical thinking skills.

We provide a well-rounded education that integrates subjects such as language arts, mathematics, science, and social studies. Through thematic units, students connect their learning to real-world contexts, enhancing their understanding and application of knowledge. Our dedicated educators support individualized learning pathways, ensuring that each child can thrive academically and personally.





At WISS, we cultivate a strong sense of community where collaboration and respect are paramount. Students engage in group projects and cooperative learning experiences that build teamwork skills and social awareness.

Parental involvement is highly encouraged, with opportunities for families to participate in school activities and events. We also promote global citizenship by exposing students to diverse cultures and perspectives, preparing them to be empathetic and responsible members of the global community.

Our Middle and Upper Elementary School provides a nurturing environment that empowers students to reach their full potential in their educational journey.



Secondary

School Profile



The Western International School of Shanghai (WISS) Secondary School serves students aged 11 to 18, offering a comprehensive educational experience grounded in the International Baccalaureate (IB) framework. Our curriculum includes the Middle Years Programme (MYP), Diploma Programme (DP), and the Career-related Programme (CP), ensuring a well-rounded approach that prepares students for future challenges.

In the MYP, students engage in inquiry-based learning, developing critical thinking and problem-solving skills across various subjects. The DP offers rigorous academic courses that lead to internationally recognized qualifications, fostering independent research and analytical abilities. The CP combines DP courses with career-related studies, equipping students with practical skills and real-world experiences.



At WISS, we emphasize personalized learning pathways, allowing educators to tailor instruction to meet individual student needs. Our dedicated teachers support students in setting academic goals and provide ongoing feedback to promote growth.

Extracurricular activities, including clubs, sports, and community service, enrich the student experience and foster social responsibility. We also focus on global citizenship, encouraging students to appreciate diverse perspectives and contribute positively to society.

Our Secondary School empowers students to excel academically while developing into compassionate, informed leaders ready to navigate an increasingly complex world.



[SUMAS]



[ERAU]



[SCAD]



[WAoS]

Facilities & Campus

WISS offers an 18-acre purpose-built campus designed by Weimar Architects of the Bauhaus University, Germany.

Our state-of-the-art facilities include:

- Spacious and bright classrooms
- Flexible multi-purpose spaces like Tiger Hall the Da Vinci Innovation Space, the Community Room, and the Atrium.
- World-class sports facilities including a 25m swimming pool, two gymnasiums, and playing fields, and fitness center.
- Performing arts spaces like a 300-seat auditorium and black box theatre
- Dedicated art studios, music rooms, and a dance studio
- A well-equipped library and innovation hub



Community & Student Support

WISS is a diverse community with students representing over 50 nationalities. We celebrate multiculturalism and promote intercultural understanding through a variety of events and activities such as International Day, Language Clubs, and Cultural Connection Workshops.

Global Alliance for Innovative Learning (GAIL)

The Western International School of Shanghai (WISS) is a proud member of the Global Alliance for Innovative Learning (GAIL), an exclusive confederation of eight top-tier schools across six continents. As a founding member, WISS is part of a unique global community committed to fostering international understanding and innovative education. This prestigious alliance enables WISS students and faculty to engage in collaborative projects, student exchanges, and annual conferences, enhancing their global perspectives and learning experiences beyond traditional boundaries.

Parent Support Group

The WISS Parent Support Group fosters community engagement, enhancing school-family partnerships through volunteer activities, events, and initiatives that enrich the WISS experience. It provides a platform for parents to connect, share insights, and actively contribute to their children's education, creating a vibrant and supportive school community.



Student Support

Our integrated counseling services provides academic, social, and emotional support to help students succeed.

We offer:

- Learning support services ranging from in-class support to small group instruction
- Social-emotional support through our advisory programme and counseling services
- University guidance starting from Grade 6 to help with university applications



Extracurricular Activities





WISS offers a vibrant array of extracurricular activities and After School Activities and is home to world-class academies such as:

- ISTA Performing Arts Academy
- GAIL (Global Alliance for Innovative Learning)
- FD Football Academy
- Duke of Edinburgh's International Award
- WISS Academy (Sports, Arts and STEM)

Students can choose from a wide range of sports, arts, academic, and community service activities to develop their talents and interests.



[ASA Brochure]



Academic Advisory Programme



Our Academic Advisory Programme is led by experienced education professionals who serve as mentors, forging strong relationships with students and their families. These advisors offer personalized guidance, tailoring their support to the unique needs and aspirations of each student.



Through regular one-on-one meetings and group sessions, advisors help students:

- Set academic and personal goals
- Develop effective study habits and time management skills
- Explore their interests and passions
- Make informed decisions about course selections and extracurricular activities
- Prepare for university applications and future careers

The Academic Advisory Programme is integrated into our daily schedule, with dedicated advisory time built into each student's timetable. During these sessions, students engage in activities that promote self-reflection, goal-setting, and community service initiatives.

By offering individualized support and guidance, the Academic Advisory Programme empowers WISS students to take ownership of their learning, make informed decisions, and ultimately achieve their full potential. This programme is a testament to our commitment to nurturing well-rounded individuals who are prepared to thrive in an ever-changing world.

Add graphic

University Acceptances

At the Western International School of Shanghai (WISS), our graduates are well-prepared for the next step in their academic journeys, with a strong track record of university acceptances. WISS students have received offers from prestigious institutions worldwide, including the University of Toronto, University College London, and Purdue University.





The diverse talents and interests of our students are reflected in their successful admissions to a wide range of universities, showcasing the quality of education and holistic development they experience at WISS. We take pride in nurturing well-rounded individuals ready to excel in their chosen fields.

Accreditations & Associations

Western International School of Shanghai (WISS) is proud to hold prestigious accreditations from the Western Association of Schools and Colleges (WASC) and the International Baccalaureate (IB). These endorsements reflect our commitment to maintaining high standards of educational quality and effectiveness, ensuring that our students receive a world-class education.





In addition to our accreditations, WISS is a member of several esteemed organizations, including the Council of International Schools(CIS), the Association of China and Mongolia International Schools (ACAMIS), and the East Asia Regional Council of Schools (EARCOS). Membership in these associations connects our school to a global network of educational institutions, fostering collaboration and sharing best practices.



These accreditations and associations not only enhance the credibility of our programs but also provide our students with opportunities for international recognition, ensuring they are well-prepared for future academic and professional pursuits.

Admissions

At Western International School of Shanghai (WISS) we offer a rolling admissions process, which means that we accept students at any time throughout the school year. As part of our Admissions Process we welcome applications from students of all nationalities.

As part of our Admissions model we believe in finding the best fit for each student within our diverse and inclusive community. Our admissions process is designed to be seamless and easy to navigate, ensuring that families feel supported every step of the way.





[Inquire Now]



[Apply Now]



[Official Wechat]

To apply, prospective students must submit an application form along with necessary documentation, including previous school records, a copy of the student's passport, and any relevant assessments or recommendations. Our admissions criteria focus on a student's academic, linguistic, and social development to ensure they can thrive in our rigorous and nurturing environment.

Once all required documents are received, applications are typically processed within three working days. For certain grade levels, an placement assessments and interview may be conducted to determine the best placement for the student. We are committed to welcoming students who will benefit positively from our educational programmes and look forward to partnering with families on this exciting journey.

For more information, please visit our website at www.wiss.cn or contact our Admissions team at enquiry@wiss.cn.



[Admissions 1]



[Admissions 2]



[WISS News]



Western International School of Shanghai

上海西华外籍人员子女学校

欢迎

在上海西华外籍人员子女学校（西华），我们欢迎所有家庭在全年任何时候前来了解我们充满活力的教育社区。来自不同背景的学生汇聚一堂，在充满支持和关爱的环境中探索、茁壮成长。

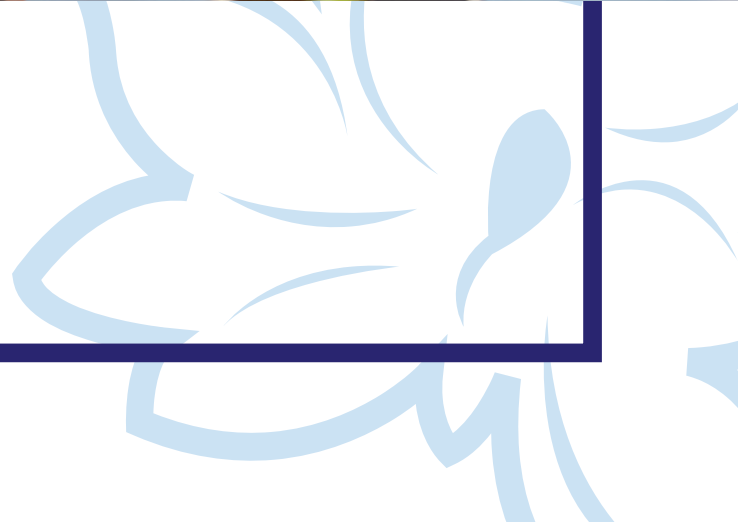
我们诚邀所有潜在家庭来了解西华根植于国际文凭（IB）理念的独特教育理念。我们致力于优异的学业、人格发展和文化交流能力，为学生在瞬息万变的世界中取得成功做好准备。

与我们一起踏上一场探究、创造和个人成长之旅。我们期待与您分享是什么让西华成为一所特别的国际学校，以及我们如何在孩子的学习旅程中与您合作。欢迎来到我们的社区！



目录

- 42 | 西华历史
- 44 | 愿景与使命
- 46 | 西华简介
- 48 | 年龄分班指南
- 50 | 西华的教育
- 52 | 小学低年级（幼儿园）概况
- 54 | 小学中高年级概况
- 56 | 中学概况
- 58 | 设施与校园
- 60 | 社区与学生支持
- 62 | 课外活动
- 64 | 学术顾问项目
- 66 | 大学录取情况
- 68 | 认证与协会
- 70 | 招生



西华历史

上海西华外籍人员子女学校（西华）成立于 2006 年，现已成为国际教育领域一所领先的机构，为 2.5 至 18 岁的学生提供教育。从一开始，西华国际学校就致力于提供拥抱多样性、培养全球公民意识的全面教育体验。



西华从最初的一小部分学生，扩大到了现在来自 50 多个国家学生的规模。这种多元文化的环境丰富了学生的学习体验，培养了学生适应全球化世界的的能力。



西华国际学校是中国大陆第一所也是唯一一所一贯制的国际文凭（IB）国际学校，通过国际文凭项目，实现无缝衔接的教育之旅。学校已经取得了重要的里程碑式的成就，包括被芝加哥大学和伦敦大学学院等著名学府录取的良好记录。





多年来，西华不断投资先进的校园设施和资源，强调课外活动对学术学习的重要补充作用。展望未来，西华将继续致力于培养全面发展的人才，以应对不断发展世界所带来的挑战。通过致力于优质教育，西华激励学生成为终身学习者和负责任的世界公民。

愿景与使命

愿景

上海西华外籍人员子女学校通过无与伦比的IB教育给予学生挑战并赋能于学生。

使命

我们将通过创新、高质量、基于探究的学习和教学以及个性化的学生发展道路实现这一愿景。





上海西华外籍人员子女学校（西华）以国际文凭组织（IB）的教育理念为基础，强调全球思维和理解能力，同时兼顾中国德智体的教育理念。

在此基础上，我们培养学生以同理心和建设性的方式与世界接触。在西华，我们理解尊重每一位学生的个性。根据他们不同的需求、兴趣和能力，我们致力于帮助他们充分发挥自己的潜能。我们对国际文凭课程的承诺使我们能够因材施教，确保学生在发展自身优势的同时，在其他方面也有所提高。

国际文凭教学法与德智体理念的融合为西华创造了独特的教育环境，培育了学生、家庭和教职员工之间的共同愿景。”德“强调在社区内建立基于关爱、尊重和责任的健康关系的重要性。”智“侧重于培养批判性思维和解决问题的能力，让学生能够创造性地应对挑战。”体“强调平衡生活方式的必要性，培养学生的身体、情感和心理健康。

通过我们的专职教师、学生和家长的参与、支持和共同努力，西华15 年以来的优质教育已确立了鲜明的特色和愿景。我们致力于培养全面发展的人才，让他们做好以同情心、知识和应变能力驾驭复杂世界的准备。

西华简介



18+ 在上海拥有 18 年以上的优质国际教育经验



80% 的教师拥有高等教育学位



2 个游泳中心



1 个舞蹈室



150+ 课后活动





5:1 师生比例



2 个图书馆



2 个体育馆



1 个表演艺术中心



100% 大学录取率



年齡

分班指南



本指南是其他教育系统进入**西华**就读的参考信息。

西华IB课程体系				美国课程体系	英国课程体系
年龄	入学年级 (西华)	学习阶段	IB课程	入学年级	入学年级
2.5	Pre-N	小学低年级 (幼儿园)	IB国际文凭 小学课程	Pre-N	Toddler
3-4	Nursery			Nursery	Nursery
4-5	Pre-K			Pre-K	Reception
5-6	KG			K	Year 1
6-7	Grade 1	小学中高年级		Grade 1	Year 2
7-8	Grade 2			Grade 2	Year 3
8-9	Grade 3			Grade 3	Year 4
9-10	Grade 4			Grade 4	Year 5
10-11	Grade 5			Grade 5	Year 6
11-12	Grade 6	中学		IB国际文凭 中学课程	Grade 6
12-13	Grade 7		Grade 7		Year 8
13-14	Grade 8		Grade 8		Year 9
14-15	Grade 9		Grade 9		Year 10
15-16	Grade 10		Grade 10	Year 11	
16-17	Grade 11		IB国际文凭 大学预科课程 / IB国际文凭 大学职业教育 课程	Grade 11	Year 12
17-18	Grade 12			Grade 12	Year 13

西华的教育

在上海西华外籍人员子女学校（西华），我们以提供真正的国际教育而自豪，欢迎来自所有不同国家课程的学生。作为中国大陆唯一一所一贯制的国际文凭（IB）国际学校，我们的独特定位使我们能够满足多元化国际社区的需求。

西华教育旨在提供以学生为中心的全面学习体验，让每个孩子都能充分发挥自己的潜能。我们相信教育可以延伸到课堂之外，鼓励学生在学术、艺术、体育和语言等方面发现探索自己的兴趣和才能。我们致力于培养学生 21 世纪的重要技能，确保他们做好充分准备，迎接瞬息万变的世界所带来的挑战，培养独立的思考者和负责任的世界公民。



课程与活动

西华根据国际文凭组织（IB）的框架，为学生提供健全均衡的学术课程。我们的国际化课程是独一无二的，因为我们是中国大陆唯一一所一贯制的 IB 国际学校。

我们提供：

- 小学（幼儿园托班 – 5 年级）：国际文凭小学课程（IBPYP）
- 初中（6 – 10 年级）：国际文凭中学课程（IBMYP）
- 高中（11 – 12 年级）：国际文凭大学预科课程（IBDP）
- 高中（11 – 12 年级）：国际文凭职业教育课程（IBCP）

除国际文凭课程外，西华还提供：

- 多种语言课程，包括英语、中文、*德语、*西班牙语、*韩语和*法语
- 艺术、技术、体育等多样化的选修课和探索课
- 个性化学习路径，满足每个学生的独特需求
- 实习项目

* 依据实际情况和需求而定



小学低年级

(幼儿园) 概况





上海西华外籍人员子女学校（西华）小学低年级（幼儿园）的课程致力于通过全面的、以探究为基础的方法培养 2.5 至 5 岁的幼年学生。该课程通过鼓励孩子探索自己的兴趣并提出问题，促进他们在社交、情感、身体和认知方面的发展。通过将语言艺术、数学、科学和艺术等学科整合到主题单元中，学生可以参与实践活动，培养批判性思维，加强与现实世界的联系。

西华注重营造一个让孩子们感到安全且受重视的充满关爱的社区，并由专职的教育工作者培养孩子建立积极的人际关系。学校通过组织家长定期交流与学生成就的庆祝活动，加强家校之间的关系。

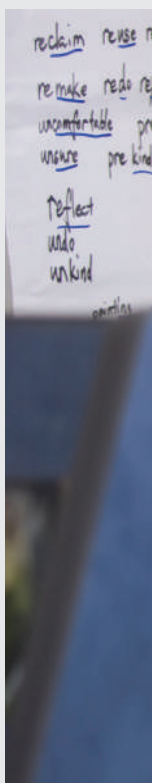
该课程还注重培养学生的全球公民意识，让孩子们接触不同的文化和观点，培养他们的同理心和理解力。总之，西华小学低年级（幼儿园）的课程通过探索每个学生独特的成长历程，为他们将来在多元文化环境中取得学业成功打下坚实的基础，从而为他们的终身学习奠定坚实的基础。

小学 中高年级

概况

上海西华外籍人员子女学校（西华）的小学中高年级是为 6 至 11 岁（1 至 5 年级）的学生设计的，注重通过全面综合的课程培养学生对学习的热爱。我们的课程强调探究式学习，鼓励学生探索、提问并培养批判性思维能力。

我们提供的全方位教育，将语言艺术、数学、科学和社会研究等科目融为一体。通过主题单元，学生将所学知识与现实世界联系起来，加深对知识的理解 and 应用。我们敬业的教育工作者会为学生个性化的学习道路提供支持，确保每个孩子都能在学业和个性方面茁壮成长。





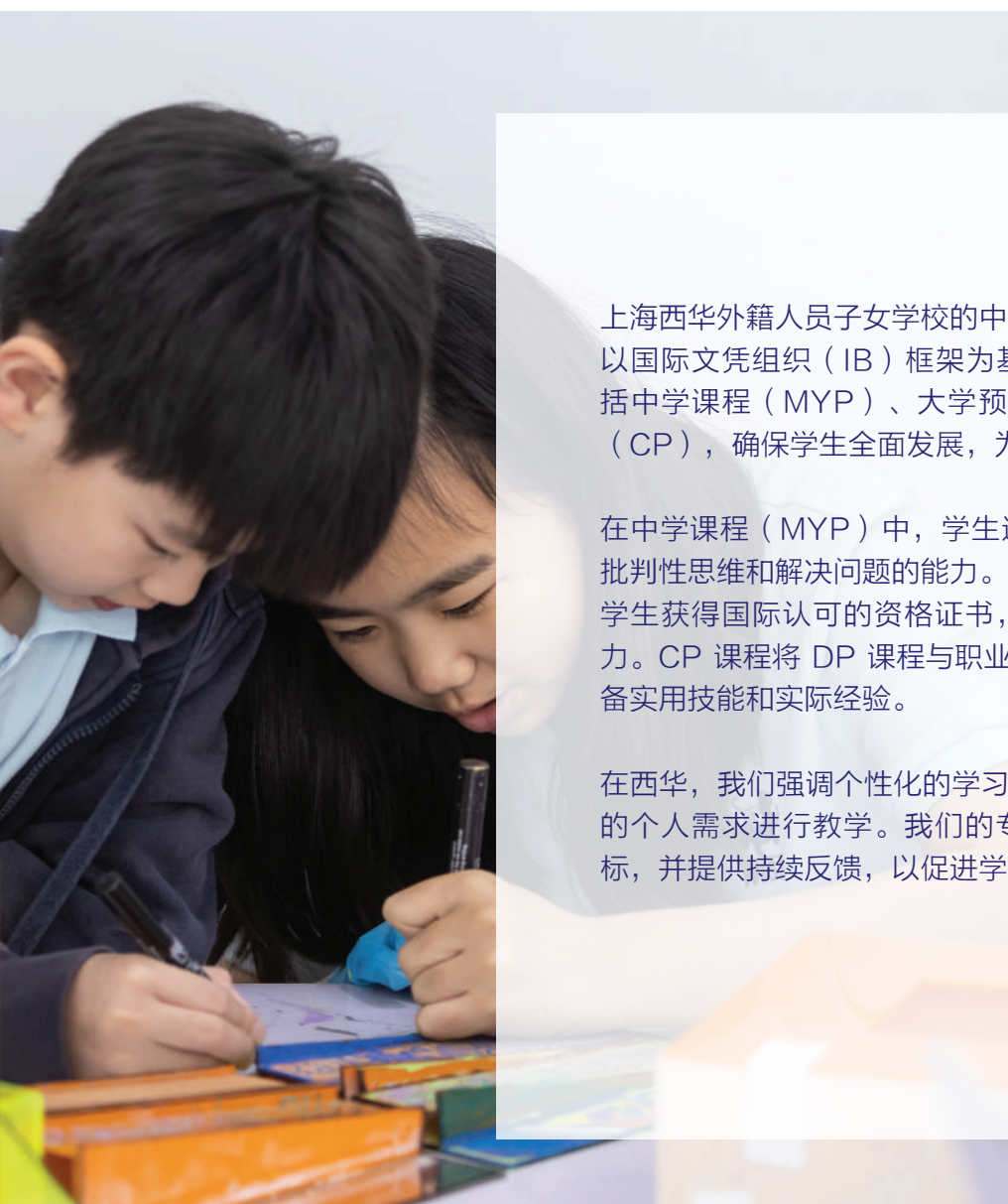
在西华，我们认为协作和尊重是最重要的，并培养了一种强烈的社区意识。学生参与小组项目和合作学习，培养团队合作技能和社会认知。

我们大力鼓励家长参与学校活动。我们还通过让学生接触不同的文化和视角，培养他们成为富有同情心和责任感的国际社会成员，从而提升他们的全球公民意识。

我们的小学（中高年级）提供了一个良好的育人环境，使学生能够在教育之旅中充分发挥自己的潜能。



中学概况



上海西华外籍人员子女学校的中学部为 11 至 18 岁的学生提供以国际文凭组织（IB）框架为基础的全面教育。我们的课程包括中学课程（MYP）、大学预科课程（DP）和职业教育课程（CP），确保学生全面发展，为未来的挑战做好准备。

在中学课程（MYP）中，学生进行探究式学习，培养各学科的批判性思维和解决问题的能力。DP 严谨的学术课程，可以让学生获得国际认可的资格证书，培养学生的独立研究和分析能力。CP 课程将 DP 课程与职业相关的学习结合起来，使学生具备实用技能和实际经验。

在西华，我们强调个性化的学习道路。教育工作者能够根据学生的个人需求进行教学。我们的专职教师会帮助学生制定学业目标，并提供持续反馈，以促进学生的成长。



包括社团、体育和社区服务在内的课外活动丰富了学生的经历，培养了他们的社会责任感。我们还注重全球公民意识，鼓励学生尊重不同的观点，积极为社会做出贡献。

我们的中学课程让学生能够在学业上取得优异成绩，同时培养他们成为富有同情心、见多识广的领导者，为驾驭日益复杂的世界做好准备。



[SUMAS]



[ERAU]



[SCAD]



[WAoS]

设施与校园

西华的校园占地18英亩，由德国包豪斯大学魏玛建筑师事务所设计。

我们的先进设施包括：

- 宽敞明亮的教室
- 灵活的多功能教室，如老虎厅、达芬奇创新空间、社区活动室和中庭
- 世界一流的体育设施，包括一个 25 米长的游泳池、两个健身房、操场和健身中心。
- 可容纳 300 人的礼堂、黑箱剧院等表演艺术空间
- 专用的美术教室、音乐教室和舞蹈教室
- 设备齐全的图书馆和创新中心



社区与 学生支持

西华是一个有来自 50 多个国家学生的多元化社区。我们通过各种活动，如国际日、语言俱乐部和文化交流研讨会等，庆祝多元文化并促进跨文化交流。

全球创新学习联盟(GAIL)

上海西华外籍人员子女学校（西华）是全球创新学习联盟（GAIL）的荣誉成员，该联盟由遍布六大洲的八所名校组成。作为创始成员以及这个独一无二的全球社区的一员，西华致力于促进国际理解和创新教育。这一享有盛誉的联盟使西华的师生能够参与合作项目、学生交流和年度会议，超越了传统界限，提升了他们的国际视野和学习体验。

家长支持小组

西华家长支持小组通过志愿者项目、各类活动和倡议促进社区成员的参与，加强家校之间的伙伴关系，丰富西华的教育体验。该小组为家长提供了一个交流平台，让他们可以相互沟通、分享见解，并积极为子女的教育出谋划策，从而创建一个充满活力、相互支持的学校社区。



学生支持

我们的综合咨询服务提供学术、社交和情感支持，帮助学生取得成功。

我们提供：

- 从课堂支持到小组指导的学习支持服务
- 通过我们的顾问计划和辅导服务提供社会情感支持
- 从 6 年级开始提供大学指导，帮助申请大学



课外活动





西华，作为世界一流学院的所在地，提供一系列精彩的课外活动和课后活动，如：

- 国际学校戏剧协会
- 全球创新学习联盟
- FD足球学院
- 爱丁堡公爵国际奖
- 西华学院（运动、艺术和STEM）



【 课后活动手册 】

学生可以选择各种体育、艺术、学术和社区服务活动来培养自己的才能和兴趣。



学术顾问项目



我们的学业顾问项目由经验丰富的专业人士担任导师，与学生及其家庭建立牢固的关系。这些顾问提供个性化指导，根据每个学生的独特需求和期望提供支持。



通过定期的一对一会议和小组会议，学术顾问会为学生提供以下帮助：

- 制定学业和个人目标
- 培养高效的学习习惯和时间管理技能
- 探索他们的兴趣和爱好
- 就选课和课外活动做出明智的决定
- 为申请大学和将来就业做好准备

学业顾问项目已纳入我们的日常课程表，每个学生的课程表中都有专门的咨询时间。在这些时间里，学生们参与各种活动，以促进自我反思、目标设定和社区服务活动。

通过提供个性化的支持和指导，学业顾问项目使西华的学生能够掌握学习的主动权，做出明智的决定，并最终充分发挥自己的潜能。这个项目体现了我们致力于培养全面发展的人才，使他们能够在不断变化的世界中茁壮成长。

大学录取 情况

在上海西华外籍人员子女学校（西华），我们的毕业生为下一步的学业之旅做好了充分准备，并取得了良好的大学录取记录。西华的学生收到过多伦多大学、伦敦大学学院和普渡大学等世界著名学府的录取通知书。





我们的学生拥有不同的才能和兴趣，他们成功地进入了不同类型的大学，展示了西华的教育质量。我们为培养出全面发展的人才而感到自豪，他们随时做好了在自己选择的领域大显身手的准备。

认证与协会

上海西华外籍人员子女学校（西华）拥有美国西部学校与学院协会（WASC）和国际文凭组织（IB）的权威认证，对此我们深感自豪。这些认证反映了我们对保持高标准教育质量和效率的承诺，确保我们的学生接受世界一流的教育。





除了认证之外，西华还是国际学校理事会（CIS）、中蒙国际学校协会（ACAMIS）以及东亚地区学校理事会（EARCOS）等多个知名组织的成员。这些协会的成员资格将我校与全球教育机构网络连接起来，促进合作并分享最佳实践。



这些认证和协会不仅提高了我们课程的可信度，还为我们的学生提供了获得国际认可的机会，确保他们为未来的学术和职业发展做好充分准备。

招生

在上海西华外籍人员子女学校（西华），我们在整个学年的任何时候都可以接受学生。我们欢迎所有国籍的学生申请入学。

作为我们招生模式的一部分，我们相信在我们多元化和包容性的社区中，每个学生都能找到最适合自己的学校。我们的招生流程简单易懂，确保家庭在每一个阶段都能获得支持。





申请时，准学生必须提交申请表和必要的文件，包括以前的学业记录、学生的护照复印件以及任何相关的评估或建议。我们的录取标准侧重于学生的学业、语言和社会发展，以确保他们能够在我们严谨的教育环境中茁壮成长。

收到所有所需文件后，通常会在三个工作日内处理申请。对于某些年级，可能会进行分班评估和面试，以确定最适合学生的年级。我们希望学生可以从我们的教育中获益，期待着与所有家庭一起踏上这段令人兴奋的旅程。

如需了解更多信息，请访问我们的网站www.wiss.cn或联系我们的招生团队enquiry@wiss.cn。





Western International School of Shanghai
上海西华外籍人员子女学校







**Western International
School of Shanghai**

上海西华外籍人员子女学校



Western International School of Shanghai

上海西华外籍人员子女学校



RECEPTION

+86 (21) 6976 6388


Admissions

+86 (21) 6976 6015 (English)

+86 (21) 6976 6013 (Chinese)

 enquiry@wiss.cn

 www.wiss.cn

 555 LianMin Rd, Xujing Town,
QingPu District, Shanghai, China, 201702

上海市青浦区徐泾镇联民路555号
邮编201702